

RECONSTRUCTING AND REJUVENATING

ANTIOXIDANT | RADIANT BRIGHTNESS | ZERO FRIZZ | RETURN
THE MASS LOST BY CHEMICAL AND MECHANICAL WORK REBUILD
AND REPAIR | HINT REFLEXES



BLUE DIAMOND BTOX

APPLICATION MANUAL

FACT SHEET

Treatment created specifically to recover those hair damaged by factors such as discoloration, sun exposure, chlorine in swimming pools and excessive use of the iron and dryer, among others. At the same time, it has the particularity of eliminating those unwanted warm reflections, promoting a more toned even and more platinum blonde. This treatment basically provides the total reconstruction of the hair damaged, specifically based on a complete cuticle sealing, giving strength and volume to the hair, reason for which we finally obtain a total alignment of the capillary strand, obtaining as a result a healthy hair, shiny and with a lot of movement that lasts over time.

COMPONENTS



TRIPLE COMPLEX PROTEIN SYSTEM

The Micro Proteins that contain **AMINO ACIDS OR LOW WEIGHT MOLECULES**, whose function is to recover the Microfibril. Medium proteins, known as **QUATERNIZED KERATIN**, which are responsible for the recovery of the Macrofibril. And finally, there is **HYDROLYZED KERATIN**, which is responsible for the recovery of the cuticle and capillary alignment.



ROSEHIP

Contains amino acids, oleic acid, vitamin A. Provides softness, regenerates, hydrates.



PHOSPHOLIPIDS

Moisturizing agent, regenerator of lipids within cortex.



ALECRIM

Improves circulation of the blood in the scalp.



PRACAXI

Promotes the moisturizing action of the hair, preserving its natural moisture, intensifying elasticity, softness, and natural shine.



LAVENDER OIL

Has regenerative properties.



ROSEMARY EXTRACT

Strengthens hair and prevents hair loss.



VIOLET FLOWER

Flower containing blue pigments that helped to keep them blonde shades.



MICA

Rich mineral that provides an unrivaled shine, simulating small diamond cones.



HIBISCUS FLOWER EXTRACT

Gives shine to hair.

SHAMPOO

STAP 1

PH: 7.5 - 8.5
Color: translucent shiny

Essential first step in hair preparation. This works by sanitizing the scalp and the cuticle of the hair strand, eliminating all impurities. Opens the cuticle scales, facilitating greater absorption of active ingredients.

Function

- Clean and prepare hair.



MASK

STAP 2

PH: 3.5 - 4.5
Color: Blue

Exposure time: 10 minutes on hair that does not have greater damage and 20 minutes in the case of damaged hair, abused or dehydrated. Recovers the lost mass of the hair strand, caused by chemical, mechanical, and environmental processes.

Function:

- Provide intense shine and extreme softness.
- Tint warm highlights.
- Reconstruct damaged hair.
- Eliminate frizz.



CONTRAINDICATIONS

- Do not apply in diseases of the scalp
- Under 12 years

1



Before starting, a correct diagnosis must be made to verify the resistance of the hair in the cauterization process (Straighten iron sliding) and obtain the desired results.

Detangle the hair, then wet it with plenty of water, apply 10 ml of shampoo in the palm of the hand, activate until the texture changes.



2

STAP 1

3

Deposit the shampoo (Step 1) directly on the scalp, distribute in the temporal, parietal, frontal and occipital areas. Massage until achieving a correct distribution and complete sanitization of the scalp.



Repeat the same procedure for the second wash, but this time directing the foam towards the lengths, massaging in favor of the cuticle by strands. This last wash prepares the hair, as it provides hydration and facilitates the sliding of the comb. Once the last wash is finished, rinse with plenty of water, remove excess moisture with a towel and go to the work station.

4



Detangle hair carefully and dry 70%.

Then divide it into 6 quadrants (two frontal, two high napes "parietal", and two low napes "occipital").

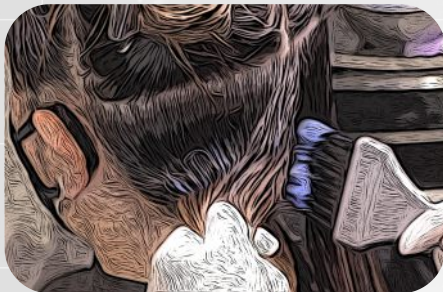


5

STAP 2



6



Begin the application of the Mask (Step 2) around the contour of the quadrant 1 cm away from the scalp. Then make a horizontal division in the middle of the quadrant and apply on the upper and lower part to start the dragging of the product with a comb (preferably with teeth very together) extend from the growth towards the lengths to achieve the total wetting of the hair strand.



7



Once the exposure time is over, begin to dry the hair in a direction towards the tips, working in a linear way, in preparation for the cauterization work.

Once the drying is finished, start the cauterization according to the previous diagnosis, guided by the ironing board. Consider that in the cauterization process, the hair strands cannot be more than 1 cm thick.

**SEE RECOMMENDATION
IRONING TABLE**

8



RECOMMENDATION

IRONING BOARD

Growth: 5 to 10 Glides

Media: 3 to 5 Glides

Tips: 1 to 3 Glides

Damaged Hair
150°C / 300°F

Normal Hair
180°C / 375°F



IMPORTANT

Straighten iron generates alignment



9

Rinse with plenty of water, until the product is completely removed from the hair, once at the workstation, blow dry or finish as desired.

Daily Care



Shampoo:

The Blue Diamond Shampoo was specially formulated to prolong the treatment of hair reconstruction (Blue Diamond Hair Btox) and to eliminate those oxidized tones that have lost their shine and color, thus promoting more even and platinum tones.

Conditioner:

The Blue Diamond conditioner is a complement to achieve greater durability of the Blue Diamond Btox Hair reconstruction treatment, providing softness and more platinum blondes.

Mask:

Its very creamy consistency complements the previous steps by reactivating each component of the treatment, resulting a very silky and extremely shiny hair with a natural movement.


BLUE DIAMOND
DAILY CARE

